

- © Ministry of Science and ICT Public Announcement No. 2025-0332
- © Ministry of Health and Welfare Public Announcement No. 2025-0215
- © Korea-US Collaborative Research Fund (KUCRF) Public Announcement No. 2025-001

**The First Korea-US Collaborative Research Project for 2025  
Public Announcement of New Project Applications**

The new project applications for the 2025 Korea-US Collaborative Research Project are notified as below. Those interested in conducting R&D projects are invited to apply according to applicable regulations.

March 18, 2025

Yoo Sang-im, Minister of Science and ICT

Cho Kyu-hong, Minister of Health and Welfare

Kim Yong-jin, Director of KUCRF

# I. Overview of the Public Announcement of New Project Applications

※ Refer to the Request for Proposal (RFP) for detailed information on applications.

※ Please note that the number of selected projects may vary based on the evaluation and deliberation results.

## <Details and Budget of New Project Applications in 2025>

RFP title	Project type	Budget (Year 1)	Project period	Eligible Target/Project Structure Requirements	No. of selected projects
Korea-U.S. Collaborative Research Project	Open call	2 billion KRW (10 billion KRW)	In 4 years (6 months for Year 1)	· (Eligible targets) industry, academia, research institutions, and military · R&D projects driven by Korea and collaborative Korea-U.S. research initiatives (further collaborative R&D projects can be considered)	Up to 7
<b>Total</b>					<b>Up to 7</b>

## <Annual budget allocation by project based on execution details (draft)>

Category	Open call	Total budget
Year 1 (6 months)	(1) 1 billion KRW	(2) 7 billion KRW
Year 2 (12 months)	(3) 2 billion KRW	(4) 14 billion KRW
Year 3 (12 months)	(5) 2 billion KRW	(6) 14 billion KRW
Year 4 (12 months)*	(7) 1 billion KRW	(8) 7 billion KRW
<b>Total by project</b>	<b>(9) 6 billion KRW</b>	<b>(10) 42 billion KRW</b>

※ A maximum of 1 billion KRW for 6 months in Years 1 and 4 (2025, 2028), and up to 2 billion KRW for 12 months in Years 2 and 3 (2026, 2027)

\* The research period in Year 4 lasts 12 months, but funding is provided for the remaining 6 months.

## II. Application Requirements

### ○ Qualifications of R&D Institutions

○ Research and development (R&D) institutions refer to institutes that satisfy the criteria outlined in Article 2 Paragraph 3 of the National Research and Development Innovation Act.

#### [Articles 2 (Definitions) Paragraph 3 of the National Research and Development Innovation Act]

3. The term "research and development institute" means an institution or organization that conducts a national research and development program, among the following:
- A. A research institute directly established and operated by the State or a local government;
  - B. A school under Article 2 of the Higher Education Act (hereinafter referred to as "university");
  - C. A government-funded research institutes in accordance with Article 2 of the Act on the Establishment, Operation and Fostering of Government-Funded Research Institutes;
  - D. A government-funded science and technology research institutes in accordance with Article 2 of the Act on the Establishment, Operation and Fostering of Government-Funded Science and Technology Research Institutes;
  - E. A local government-funded research institute under Article 2 of the Act on the Establishment and Operation of Local Government-funded Research Institutes;
  - F. A specific research institutes under Article 2 of the Specific Research Institutes Support Act;
  - G. A company under Article 169 of the Commercial Act;
  - H. Other institutions and organizations prescribed by Presidential Decree;

### ○ Application Qualifications

○ Researchers who are still within the participation restriction period for national R&D programs as of the day before the application deadline

- Individuals subject to participation restrictions under Article 32 of the National Research and Development Innovation Act are ineligible to apply for the project. However, those whose participation restrictions are lifted by the day before the application deadline are eligible to apply.

○ Researchers who breach the regulations regarding the maximum number of simultaneous R&D programs allowed in national research and development initiatives

- Under Article 64 of the Enforcement Decree of the National Research and Development Innovation Act, a researcher is permitted to participate in no more than

five R&D projects at the same time, with a maximum of three of these projects being led by the researcher as the project director. However, for the “collaborative institution type” where overseas R&D institutions cover the costs, a researcher may simultaneously participate in up to six R&D projects, with no more than four of these projects being led by the researcher as the project director. (See Article 64, Paragraph 2 of the Enforcement Decree of the National Research and Development Innovation Act)

\* The contracted principal investigator and contracted participating researcher are exempt from application restrictions.

\* If the current project is scheduled to finish within 6 months before the application deadline, it will not be considered as part of the projects subject to participation restrictions when applying for a new project.

- As a preliminary review of participation restrictions occurs after the submission of the R&D plan, researchers are advised to verify the number of concurrent national R&D programs they are involved in before applying, to ensure eligibility for the project.
- The selected project may be disqualified if the principal investigator exceeds the participation limit.

○ **(Application Conditions)** The project proposal must include the research activities carried out by the overseas institution, detailing aspects such as technical collaboration, role distribution, and the plan for utilizing research funds.

- Domestic and U.S. researchers should establish a collaborative research team to apply for the project, with a recommendation to create a multidisciplinary or interdisciplinary convergence team\*.

\* A research group that integrates various academic disciplines and research fields to promote originality and facilitate the planning and execution of global collaborative research.

- **Submission of documents (e.g., LOI, letter of intent) to verify the overseas institution's principal investigator's intent to participate**

- **Specific details regarding the cash or in-kind R&D expenses to be provided by the overseas institution must be included.**

※ The budget for R&D projects may be modified following phase evaluations, and the research period, budget, and details may be altered due to changes in the government's budget situation, revisions to laws or regulations,

or shifts in government policy.

○ **(Participation Format)** Before engaging in the collaborative R&D program, domestic research institutions (principal investigators) and overseas research institutions (overseas researchers) must conduct internal discussions to agree on participation at the institutional level.

\* Overseas institutions for this project: The main office and research institute of the relevant institution must be located in a U.S. hospital, research institute, or university (companies are not eligible).

\* The principal investigator at the overseas institution must be a researcher associated with a research institution based in the U.S. Researchers who are based in Korea or connected to a Korean research institution and are only on a short-term assignment or research year at a U.S. partner institution are ineligible to apply.

- If the project cannot proceed due to the withdrawal of an overseas institution from collaborative research, the lead principal R&D institution will be held responsible.

- **The primary approach is to participate in the “collaborative institution type” within the different types of international collaborative research promotion.**

\* In the case of the “collaborative institution type”, a formal agreement between the business unit and the overseas institution is required, with the overseas institution responsible for covering the R&D expenses, either in cash or in kind. (See the International Collaborative R&D Manual for details)

\* The standard agreement form for the project between the KUCFR and overseas institutions will be provided on the KUCFR's website ([www.kucrf.org](http://www.kucrf.org)) at a later date. The agreement will be signed with the respective overseas institution once the project is selected. Furthermore, the business division aims to facilitate the creation of agreements that define the ownership and distribution of R&D results between the participating research institutions.

**[International Collaborative Research Manual p.4]**

Promotion type

(1) General type

- The general type refers to a form of collaborative research traditionally conducted, where domestic R&D institutions collaborate with overseas institutions, utilizing international collaborative R&D funds or external expert technology expenses to carry out the research.
- Overseas institutions collaborate in R&D through agreements established between domestic research institutions and international institutions (foreign researchers).
  - Domestic R&D institutions execute research based on agreements and R&D plans made with specialized institutions, while overseas institutions do not sign agreements with the head of the central administrative agency or the head of the specialized institution.
  - The director of a domestic R&D institution must obtain approval from the director of the central administrative agency before including international collaborative R&D expenses in the plan (Article 28, Paragraph 1 of the National Research and Development Program Expense Utilization Standards 1).
  - Domestic R&D institutions must include the name of the participating overseas institution in the “non-R&D institution” section of the R&D plan form and outline the collaborative research promotion plan along with its specific details.

(2) Collaborative institution type

- The collaborative institution type is a method in which an overseas institution participates as a lead principal or collaborative R&D institution to collaboratively conduct R&D projects with a domestic R&D institution.
  - Following the revision of the Enforcement Decree of the National Research and Development Innovation Act (effective on February 6, 2024), overseas institutions are now recognized as official R&D institutions under the Act. As a result, the following collaborative structures are permitted:
    - i) Domestic lead principal institution with an overseas collaborative institution
    - ii) Overseas lead principal institution with a domestic collaborative institution
    - iii) Domestic general lead principal institution with an overseas lead principal institution
    - iv) Domestic lead principal institution with an overseas general lead principal institution
  - For an overseas institution to participate as an R&D institution in a national R&D program, it must collaborate with a domestic R&D institution and is not permitted to undertake the project independently.
- Overseas institutions, as signatories to agreements with the directors of domestic central administrative agencies (or specialized agencies), are required—such as their domestic R&D counterparts—to comply with obligations outlined in innovation-related laws, contractual agreements, and R&D plans.
- If deemed necessary by the director of a central administrative agency, a domestic institution may carry out part of the tasks assigned to an overseas institution. In such cases, the respective obligations and responsibilities of both the domestic and overseas institutions must be specified in agreements, contracts, or other relevant documents.
  - For instance, if overseas institutions face challenges in using integrated information systems, domestic institutions may use the system on their behalf starting from the project application phase. In such cases, prior approval procedures, such as including relevant details in the contract or preparing a power of attorney (Appendix Form No. 8), are required.
  - The agency processing of integrated information systems is available for overseas institutions that face difficulties using the system. Thus, agency processing between domestic institutions is not permitted.



Collaborative research performance	Research conduct	General type		Collaborative institute type		Separate project type	
		Domestic R&D institution	Overseas R&D institution	Lead Principal R&D institution	Collaborative R&D institution	Domestic R&D institution	Overseas R&D institution
Achievement generation	R&D project	R&D project	Partial subcontract	Project A	Project A*	Project A	Project B
	R&D achievement	R&D achievement	Subcontracted achievement	Achievement A		Achievement A	Achievement B
Ownership of achievements	Principle	The <b>ownership share</b> is allocated according to the <b>level of contribution</b> (reflecting how much researchers from each organization have contributed to generating the R&D achievements). *Research in invention related to the duties → Ownership (or share) is transferred to the affiliated R&D institution. (Considerations) Each organization evaluates its overall contributions to the international collaborative R&D project, taking into account factors such as R&D funding, personnel, infrastructure and equipment, and technical data.					
	Ownership of achievements	Domestic R&D institution	Overseas R&D institution	Lead Principal R&D institution	Collaborative R&D institution	Domestic R&D institution	Overseas R&D institution
		Research achievement	Subcontracted achievement	Achievement A Each party's ownership share shall be proportional to their contribution.		Achievement A	Achievement B
	Primarily owned by the domestic R&D institution (collaborative ownership)			Ownership of their own achievements			

		by agreement)		
	Transfer	Freely transferable	Consultation is necessary for ownership transfer. Right of first refusal, drag-along right	Consultation is needed for transferring sole ownership. Right of first refusal, drag-along right
	Protection	The owner holds legal responsibility for protection.	Shareholders bear the legal protection costs. (If one party waives responsibility for ownership protection, the collaborative researcher may protect/exclusively assume the rights.)	Each owner is accountable for the legal protection costs. (If one party waives responsibility for protecting their achievements, the collaborative researcher may assume exclusive control over protection/rights.)

○ **Ownership of R&D achievements**

○ R&D achievements\* related to the 11 types of research results must be registered or deposited with the designated institution in accordance with Article 33 of the Enforcement Decree of the National Research and Development Innovation Act.

\* Intellectual property rights related to products, facilities/equipment, research papers, patents, original research reports, technology summaries, life resources, software, compounds, new varieties, standards, and other related materials.

- **(IP policy)** Even if individual countries or R&D institutions have their own intellectual property (IP) policies, collaborative research conducted under a national R&D project is, in principle, governed by Korean laws and regulations. However, specific arrangements may be negotiated and determined between the participating institutions based on the nature of the collaborative R&D project and the institutions involved. The details must be clearly outlined in the **international agreement between the domestic lead principal research institution and the participating overseas research institution**, with the project team planning to provide support for the execution of this agreement.

○ **(Ownership of collaborative R&D achievements)**

- Ownership of R&D achievements from projects carried out under a “collaborative institution” is shared among all participating parties, with each party’s share determined based on the extent of their contribution. If it is challenging to precisely assess the contribution of each collaborative researcher or institution, the agreement may specify



equal ownership among participants or allow the parties to decide the ownership proportions through mutual consultation after the completion of the collaborative R&D project.

- To facilitate the effective implementation of collaborative research under other national R&D programs, activities shall be carried out in accordance with the guidelines outlined in the Manual for Conducting International Collaborative Research under the National R&D Program.

○ **Application Restrictions**

○ **(Participation Restrictions)** Institutions or researchers subject to participation restrictions in national R&D programs are ineligible to apply. However, individuals whose participation restrictions end by the day before the application deadline are eligible to apply for and conduct the project.

○ **(Exclusion Criteria for National R&D Program Support)** If a company participating in the research meets any of the following conditions, it will be excluded from receiving support:

- ① The lead principal institution, collaborative R&D institution, or contract R&D institution becomes insolvent.
- ② There is any disposition for arrears on national or local taxes, etc. (except in cases where re-startup funding is received from the Korea SMEs and Startups Agency and Credit Counseling and Recovery Service (Re-startup Business Support Committee), and in cases where any guarantee to support the re-startup of business owners to challenge again is received from the Korea Credit Guarantee Fund and the Korea Technology Finance Corporation).
- ③ It is the defaulter by the centralized credit information collection agency under the Civil Execution Act (except in cases where re-startup funding is received from the Korea SMEs and Startups Agency and Credit Counseling and Recovery Service (Re-startup Business Support Committee), and in cases where any guarantee to support the re-startup of business owners to challenge again is received from the Korea Credit Guarantee Fund and the Korea Technology Finance Corporation).
- ④ Any application is filed for the initiation of bankruptcy, rehabilitation, or personal rehabilitation proceedings (except in case where it normally repays debts under the rehabilitation plan or repayment plan approved by the court).
- ⑤ It is a company with  $\geq 3$  years from the business initiation date or incorporation date as of the closing and a debt-to-equity ratio of  $\geq 500\%$  (new borrowings through loan-type investment (convertible bond (CB) and bond with warrant (BW)) from any member of the Korea Venture Capital Association can be excluded from the total debt) or a liquidity ratio of  $\leq 50\%$  in the latest 2 financial statements (except for the overall credit rating of “BBB” or above in the corporate credit rating and the technology credit rating of “BBB” or above from the Tech Credit Bureau (TCB), or any foreign-invested company under the Foreign Investment Promotion Act with a foreign investment ratio of  $\geq 50\%$  with  $\leq 5$  years from the date of its establishment). It is not applied to any company that is less than 3 years old from the business initiation date to the application submission deadline.
- ⑥ There is total capital impairment as of the end of the latest fiscal year.
  - ※ In the event that total capital impairment occurs as Korean International Financial Reporting Standards (K-IFRS) apply, Korean Generally Accepted Accounting Principles (K-GAAP) can be applied to determine whether it is total capital impairment. In this case, the R&D institution must submit data under additional accounting standards to the specialized institution to determine whether it is capital impairment, and K-IFRS and K-GAAP cannot be mixed together.
  - \* However, even though it meets eligibility restrictions due to capital impairment in the previous year, it is excluded from eligibility restrictions on the R&D institution as it is considered not total capital impairment as the investment of more than the capital is attracted in the current year.
    - \* The total capital as of the end of the latest fiscal year + the increase in capital in the current year is greater than or equal to “0” (however, the increase in capital is limited to common (preferred) stock capital without repayment obligations).
- ⑦ For any company subject to an external audit, the opinion of the latest year account settlement audit is “Refusal to Provide Opinion” or “Unacceptable”.

○ **(Restrictions on the Number of R&D Projects)** The number of national R&D projects in which a researcher can simultaneously participate is no more than 5, of which the maximum number of projects where a researcher can serve as the principal investigator of the lead principal institution is 3. However, for the ‘collaborative institution’ type where the overseas R&D institution bears the R&D budget, the number of R&D projects that can be conducted simultaneously as a researcher is limited up to 6, while the number of R&D projects that can be conducted simultaneously as the principal investigator is up to 4. (Refer to Article 64 Paragraph 2 of the Enforcement Decree of the National Research and Development Innovation Act.)

If restrictions on the number of R&D projects are not met, the selection of the institution will be cancelled (it counts as a reason for the termination of the agreement even after selection).

※ In the event that the selection is canceled due to this reason, the next highest priority project as a result of RFP selection evaluation will be selected.

○ **(Restrictions on Duplicate Applications)** The principal investigator of the lead principal institution or collaborative R&D institution may file only 1 plan. (Duplicate applications can be filed as a participating researcher.)

- **All projects for which duplicate applications are filed as the principal investigator of the lead principal institution or collaborative R&D institution will not be evaluated. (The same applies to the principal investigator of the overseas institution.)**

○ **(Restrictions on Project Composition)** In the event that the collaborative R&D institution or contract R&D institution other than the lead principal institution is composed within the same project, they must be composed of different institutions.

\* Whether it is the same institution: To be determined by the corporation registration number (by using the corporation certificate for an agreement).

※ The institutions which have different business registration numbers but the same corporation registration number, they count as the same institution, and are not allowed to enter into an agreement.

- Projects where there is the same lead principal, collaborative, or contract R&D institution will be excluded from evaluation as a whole, including the lead principal

institution.

※ There is no limit on the number of project submissions per institution.

<Whether an application can be filed for each case of restrictions on project composition with the same institution>

R&D Institution Classification	Case 1	Case 2	Case 3	Case 4	Case 5
<b>Lead Principal Institution</b>	Institution A	<b>Institution A</b>	Institution A	<b>Institution A</b>	Institution A
<b>Collaborative R&amp;D Institution 1</b>	Institution B	<b>Institution A</b>	<b>Institution B</b>	Institution B	<b>Institution B</b>
<b>Collaborative R&amp;D Institution 2</b>	Institution C	Institution B	<b>Institution B</b>	Institution C	Institution C
<b>Contract R&amp;D Institution</b>	Institution D	Institution D	Institution C	<b>Institution A</b>	<b>Institution B</b>
<b>Allowed to file an application case by case</b>	<b>Yes</b>	<b>No</b>	<b>No</b>	<b>No</b>	<b>No</b>

○ **(Labor Cost Percentage\*)** An application cannot be filed if the sum of the labor cost percentages of national R&D projects conducted by all researchers, including the principal investigator, exceeds 100%\*\*.

\* Labor cost percentages are only used to account for labor costs and research allowances, not the actual level of participation in projects. The previous concept of participation percentage is now abolished. (Equation = Amount of labor costs accounted for in the R&D budget of the project in the year / Annual salary)

\*\* Participation is allowed with 130% for government-funded research institutes and specialized production technology research institutes (including labor cost percentages in basic projects) and 100% for national R&D projects.

○ **(Restrictions on Application with Similar Projects)** Refrain from filing an application if one already conducts or participates in similar projects, and individually check the similarity between the research plan to apply for and the previously funded national R&D projects (including those for other ministries) before applying for the project.

※ How to search for similar projects: Log in [www.ntis.go.kr](http://www.ntis.go.kr), and go to Project Participation and Management & Differentiation Review

○ **(Restrictions on the Change of the Principal investigator before the Agreement)** Changes to the principal investigator for any institution are not allowed before the agreement, and the selection of the institution may be canceled for such a change.

### III. How to Apply

#### ○ Public Announcement and Submission

※ Please check below before filing an application.

▶ For projects eligible for new funding in 2025, an application is filed, evaluated, and managed on **IRIS\*** (<https://www.iris.go.kr>).

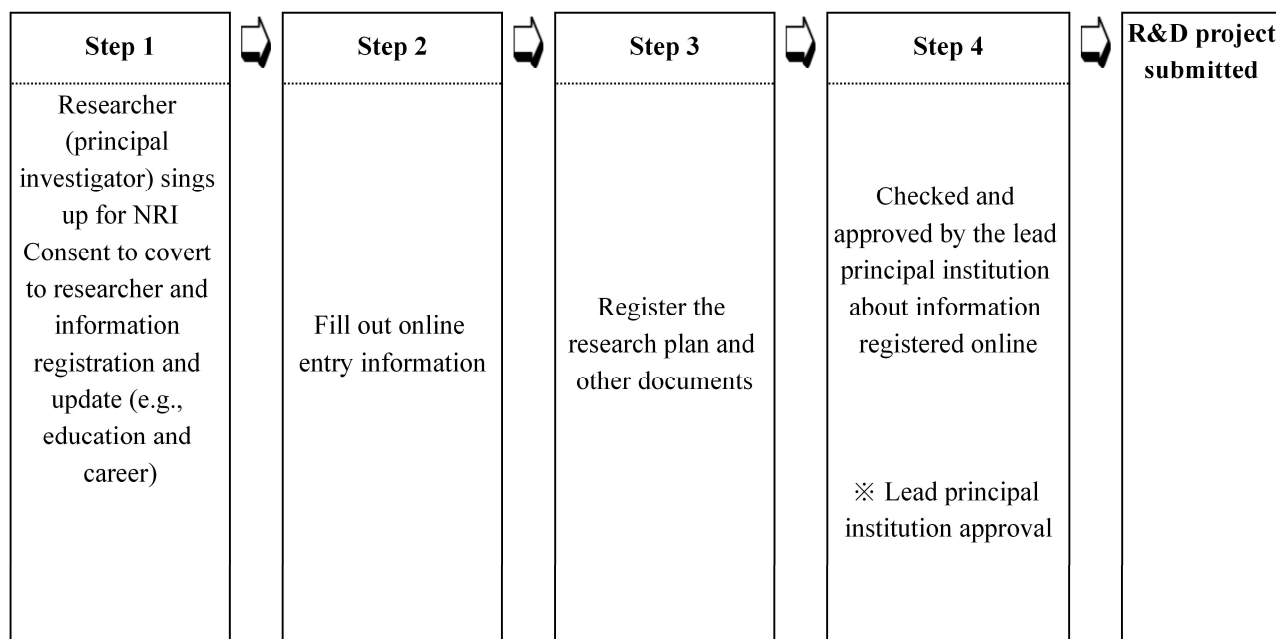
\* Integrated R&D Information System (IRIS): It is a single R&D support system across ministries, which integrates systems operated separately by different ministries and specialized institutions.

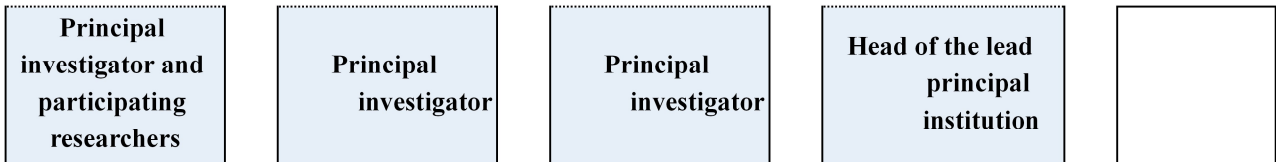
○

- (Public Announcement) ① Project announcement on IRIS ([www.iris.go.kr](http://www.iris.go.kr))
- ② Project announcement on the website of the Korea US Collaborative Research Fund ([www.kucrf.org](http://www.kucrf.org))
- (Submission) File an application on IRIS ([www.iris.go.kr](http://www.iris.go.kr))

#### ○ Application Process

○ The principal investigator logs in to the Integrated R&D Information System (IRIS, <https://www.iris.go.kr>), fills out the online entry information, and uploads the R&D plan and other documents, and then it is checked and approved by the lead principal institution.





※ Check with the person in charge of the affiliated institution to determine if it is eligible for approval from the lead principal institution prior to submission.

▶ As there are certain requirements to be met before filing an application for the project on IRIS, please prepare in advance to avoid any problem with the application for the project.

※ For more details, please refer to [Appendix] Requirements before Filing Application for R&D Project (KISTEP IRIS Working Group), IRIS Membership Signup (researcher conversion), and Researcher Information Registration Manual.

**(Researcher)** ① Sign up as a member on IRIS, ② go to the National Researcher Information (NRI) System in IRIS and agree to convert to a researcher (the national research number will be issued), ③ register information about education/career\* and major research achievements\*\* in NRI.

\* Register one's department in career information.

\*\* Create a list of completed, ongoing, and application pending projects in the last 5 years.

※ ① and ②: Required for all participating researchers, including the principal investigator (excluding student researchers at institutions integrating and managing student labor costs)

③ : Required for the principal investigator only

**(R&D Institution)** Register the institution in IRIS, file an application for the overall responsible person of the institution (granting authority as the responsible person of the institution), and register the representative of the institution.

※ The representative of the institution and the (overall) responsible person of the institution are also required to sign up for IRIS and agree to convert to a researcher (the national researcher number will be issued). If information about the representative of the institution is not registered, the researcher cannot complete the submission of an application for the project. Requirements must be met before the application period begins.

▶ Contact for IRIS: IRIS Call Center 1877-2041 or Contact Us on the website of IRIS

○

○ **Document Submission Deadline**

Category	Description
Public announcement period	<b>Mar 18 (Tue), 2025 - 14:00 on Apr 25 (Fri), 2025</b>
Principal investigator Project application (electronic entry) deadline	<b>Mar 26 (Wed), 2025 - 14:00 on Apr 25 (Fri), 2025</b>
Deadline for check and approval by the lead principal institution	<b>- 15:00 on Apr 25 (Fri), 2025</b>
Application process	File an application by a researcher ▷ Approval by the research execution institution ▷ Application is completed

○

- ※ The principal investigator must complete the submission of the R&D plan and a request for review by the institution no later than the application deadline, and the application is completed only when the head of the lead principal institution approves the application (**if the institution does not approve the application within the deadline, it will not be accepted**).
- ※ **Make sure to comply with the application deadline (14:00) (no extension is allowed after the deadline)**
- ※ Other information related to evaluation, such as the evaluation schedule and competition rate, will be made available **in Notices under Announcements on the website of the Korea US Collaborative Research Fund (www.kucrf.org)**.
- ※ Please be informed that any project whose application is not submitted in time will not be accepted, and that the system may be slow or difficult to access near the deadline (2 days before the deadline). Make sure to submit the application well before the deadline.



## IV. Applicable Laws and Regulations

- Anything not specified in this public announcement will be governed by the National Research and Development Innovation Act and its Enforcement Decree and Enforcement Rule, the Health and Medical service Technology Promotion Act, other laws and subordinate regulations, and the Korea-US Collaborative Research Project Operation Management Regulations.

※ Details are subject to change due to the enactment or amendment of applicable laws and regulations.

## V. Others

- Calculation Basis for R&D Budget

- Consider the scale of government funding for the project in the application, and calculate the appropriate R&D budget required to conduct research in accordance with the Standards for the Use of R&D Budget in National R&D Projects (Ministry of Science and ICT Notice No. 2022-72, Dec 21, 2022)

- Participating Company Contributions (Calculated per R&D Project)

※ Participating company contributions should be paid 3 months before the end date of research in the current year. If the payment deadline is breached, the R&D project may be suspended and subject to penalties through special assessment.

- Criteria for R&D contributions by type of participating company

Item	Large enterprise	Middle-standing enterprise	Small or medium enterprise
Participating company's share of the R&D budget	≥ 50% of the total R&D budget	≥ 30% of the total R&D budget	≥ 25% of the total R&D budget

Item	Large enterprise	Middle-standing enterprise	Small or medium enterprise
Cash percentage of the R&D budget borne by the participating company	≥ 15% of the R&D budget borne by the participating company	≥ 13% of the R&D budget borne by the participating company	≥ 10% of the R&D budget borne by the participating company
In-kind expense items and scope of the R&D budget borne by the participating company	a. Labor costs of the researcher hired with any money other than the R&D budget borne by the institution if the researcher conducts the R&D project b. Research facilities/equipment costs c. Technology introduction costs/research material costs		

○ **Precautions for Introducing Research Facilities/Equipment**

○ If it is planned to introduce research facilities/equipment (≥ 30 million KRW to < 100 million KRW):

- The Research Equipment Budget Review Request Form (≥ 30 million KRW to < 100 million KRW) must be filled out and attached when submitting the R&D plan.
- To build research facilities/equipment worth > 100 million KRW, it will be reviewed by the National Research Facilities/Equipment Review Committee (under the Ministry of Science and ICT) (selected projects will be announced separately).

○ It is prohibited, in principle, to purchase research facilities/equipment (≥ 30,000 USD).

- - For research facilities/equipment that must be purchased to conduct research in the overseas institution, prior approval must be obtained from the Administrative Office.

○ **Mandatory IRB Review under the Bioethics and Safety Act**

○ The researcher conducting human subject research and human-derived material research under the Bioethics and Safety Act must receive review by the Institutional Review Board (IRB) before entering into the agreement for the year.

○ **Registration and Deposit of Research Achievements**

○ If research achievements are produced, the achievements that can be utilized as resources must be registered and deposited after confirming in advance with the department in charge of the institution dedicated to research achievement management and distribution.

○ **Information about Technical Fees**

○ Technical Fee Collections and Reporting by Specialized Institutions

- The R&D achievement owner institution may enter into a contract with the person who wants to license the R&D achievement regarding the contents and scope of the license, technical fees, and the payment method of technical fees, and allow the license of the R&D achievement, in which case the R&D achievement owner institution should collect technical fees.

- The R&D achievement owner institution should submit a report on the results of technical fee collections if it enters into a technology license contract and collects technical fees.

○ Who Should Pay Technical Fees to the Government and the Payment Criteria

- If a company, such as a small or medium enterprise, middle-standing enterprise, or public enterprise, collects technical fees or directly licenses the R&D achievement that it owns, it must pay some part of the technical fees or some part of the revenue from the R&D achievement.

- If technical fees are collected or revenue is generated from the R&D achievement in accordance with Article 18 Paragraph 2 of the National Research and Development Innovation Act, the institution obligated to pay technical fees and other fees should pay the technical fees no later than the date that is 5 years after the year following the year in which the technical fees were first collected or the revenue from the R&D achievement was first generated, or the date that is 7 years after the end of the project, whichever comes first.

Institution obligated to pay technical fees and other fees	Technical fees collected from the third party	Revenue generated from the direct license of the R&D achievement	Upper limit of payment
Large enterprise/public enterprise	20% of technical fee collections	R&D achievement revenue x percentage of contributions to technology x 20%	40% of government funding
Middle-standing enterprise	10% of technical fee collections	R&D achievement revenue x percentage of contributions to technology x 10%	20% of government funding
Small or medium enterprise	5% of technical fee collections	R&D achievement revenue x percentage of contributions to technology x 5%	10% of government funding

※ For more information, see the Public Announcement Guide.

※

## VI. Contact Information

### ○ Website

- Competent ministry: Ministry of Science and ICT ([www.msit.go.kr](http://www.msit.go.kr))

Ministry of Health and Welfare ([www.mohw.go.kr](http://www.mohw.go.kr))

- Specialized institution: National Research Foundation of Korea ([www.nrf.re.kr](http://www.nrf.re.kr))

Korea Health Industry Development Institute ([www.htdream.kr](http://www.htdream.kr))

- Project public announcement: Integrated R&D Information System ([www.iris.go.kr](http://www.iris.go.kr))

Website of the Korea US Collaborative Research Fund ([www.kucrf.org](http://www.kucrf.org))

- Responsible institution: Korea US Collaborative Research Fund ([www.kucrf.org](http://www.kucrf.org))

### ○ Person in charge

- Regarding Request for Proposal (RFP), public announcements, and evaluation

Public announcement unit (RFP)	Type	Information about project details (RFP), public announcement and evaluation
		Administrative Office Contact/Email
Korea-US collaborative research support	Open call	Administrative Office of the Korea-US Collaborative Research Project 02-2072-4354/4353/4355 kucrf@snuh.org

Project application submission (entry into the system): Integrated R&D Information System (1877-2041)